



## FRISIAN Shipbrokers GmbH

Am Nesseufer 36, 26789 Leer  
 Telefon +49 491/2066880  
 chartering@frisianshipbrokers.de  
 www.frisian-shipbrokers.de

### MV "Fehn Light"

Imo: 9349459-call YLPI-built:2010

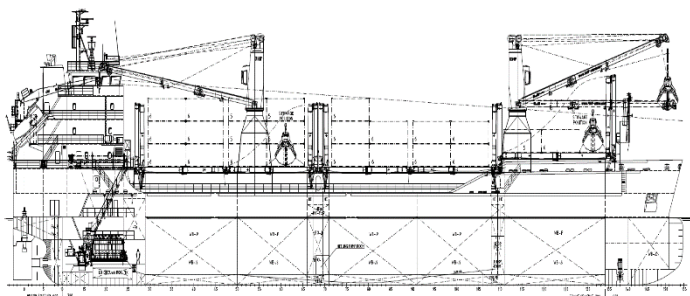
#### Vessel Type

**Multipurpose Dry Cargo, Heavy Cargo**  
 2 x 35 to gear (combinable)

Class:	GL + 100 A5, heavy cargoes
Flag:	Latvia
Port of reg:	Riga
Loa:	107,03 m
Beam:	18,20 m
Moulded depth:	10,50 m
Draught:	8,227 m
Air draught:	31,60 m (Ballast)
Gross tonnage:	6668
Net tonnage:	3625
Dwat summer:	Abt 9.650 tons
DWCC s/w:	abt. 9.100 / 9.000 to
3 Holds:	25,85 x 15,18 x 11,60 m 25,85 x 15,18 x 11,60 m 16,05 x 15,16 x 13,11 m
Capacity:	11.770 cbm 428.593 cbft
Tanktop Strength:	14,00 to per sqm
Deck Strength.:	1,75 to per sqm
Cement Holes	Yes, fitted
Containers:	Fitted on Deck, 133 TEU
Bulkheads:	none
Imo fitted:	Yes/various classes
Hatchcover:	Folding type
Cranes:	2 each 35,00to Lifting capacity



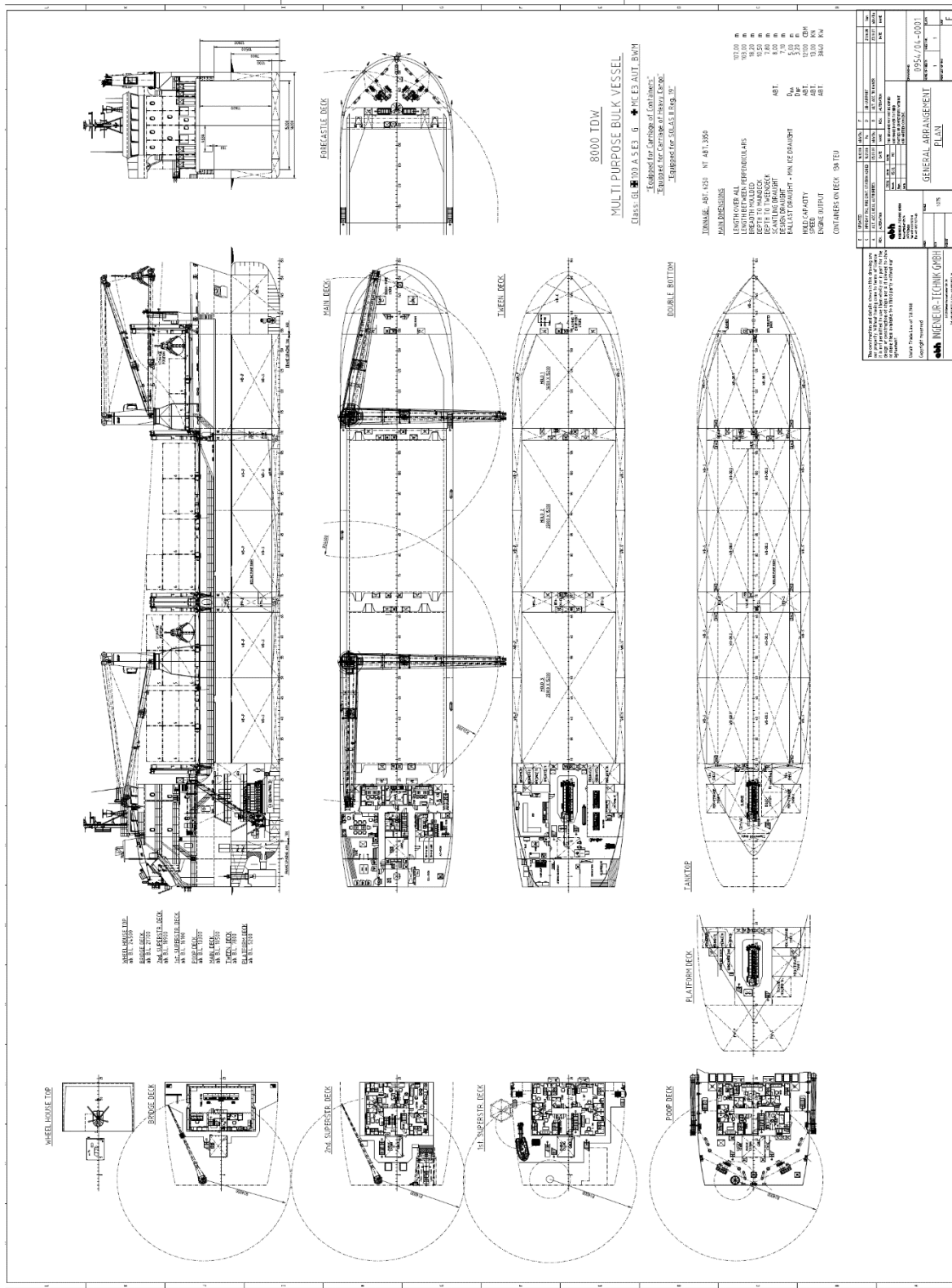
Main Engine:	Mak 8M32C 3840 kw
Generator(s):	Scania Aux engine Shaft generator
kw Bowthrusters:	450 kw
Fuel:	VLSFO / MGO





# FRISIAN Shipbrokers GmbH

Am Nesseufer 36, 26789 Leer  
Telefon +49 491/2066880  
chartering@frisianshipbrokers.de  
www.frisian-shipbrokers.de



All details about, given in good faith but not guaranteed. Specifications said to be correct, but without guarantee.